

ProxerGate5 Glass

Revolving glass access control gate



Revolving gate with tempered glass panels and glass or stainless steel outside covering. Full height, steel structure entrance gate with free of touch approaching sensor and motor-driven operation.

Features:

- Motor driven movement of the glass door panels
- Sensors start the rotation when somebody enters the gate:
 - in free-flow mode no prior authorization is required
 - in authorization-required mode prior access control check required
- Safety function: in case of pushing the Emergency button, door stops and can be freely rotated (free rotation is configurable)
- Rainproof housing

- Controllable by Ethernet TCP/IP interface, RS485 interface or by relay inputs from an external access control device
- Emergency opening: with buttons the door can be opened externally
- Traffic lights indicating state of operation

The door is driven by a silent, high-torque DC electric motor with a powerful gear system. In case of power loss the door panels are freely movable.

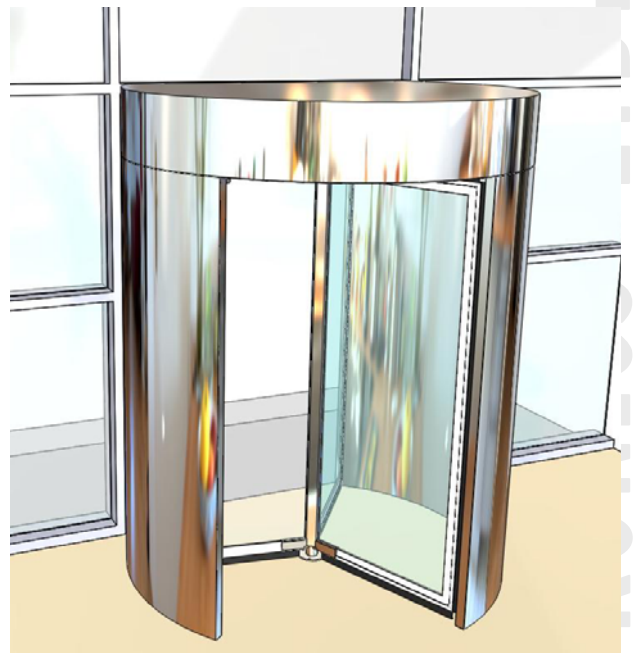
The motor is controlled by an advanced microprocessor system, with PID-algorithm driven soft-start, soft-stop, blocking detection features. The operating parameters (speed, stop positions, mode) can be remotely controlled over TCP/IP.

The gate is built of: high tensile, bent, welded steel frame structure; caulked-closed, openable, drive mechanism; and tempered glass panels. The electromechanic device is placed on the top part of the gate. The crossing can be set in both directions.

The ProxerGate5 Glass can be connected to any access control system.

In the head unit is placed the motorized wing mover and locker system; and also the microcontrolled control unit.

Here is the RJ45 Ethernet connector as well, whereby the gate can be connected to the building management or computer network. From there, it is possible to send operation mode commands, or poll the event log of the movements.



The central rotating column holds the 3x120° (or 4x90°) arranged wings. The position of the rotating column is controlled by the rotational-angle measurer. Separated safety system indicates the attempts of sabotage, straining, penetrating with loud siren alarm and/or into the supervisor center with remote sign.

Operation

The revolving door operates with free of touch, motor-driven automatic. No need of any touch: the authorized person passes through, the turnstile turns in front of him and closes behind him.



Areas of use:

- office buildings
- banks
- computer centers
- research laboratories
- entrances without human control
- industrial parks
- airports
- private parking places

Selection

- top-, side panels
- lamp outfits
- UPS batteries are enough for 500 functional operations or 4 hours

Made of high-strength steel frame, with selectable outside panel coverings:

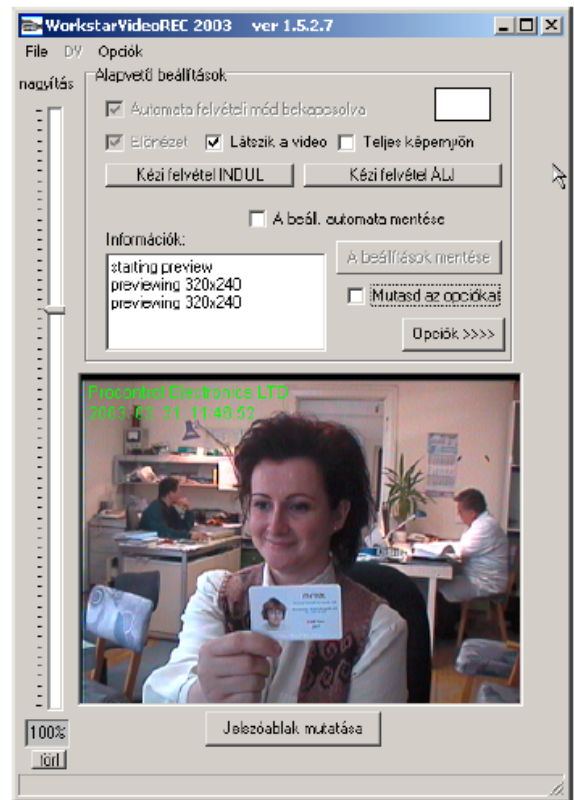
- ProxerGate5 Glass-Steel: stainless steel
- ProxerGate5 Glass-Glass glass



The glass sided version

Shape and variability

The ProxerGate 5 can be ordered in 90 degree or 120 degree turnstile variants. The part assembled structure offers a great freedom of selecting the side-, or top panels.



The operation modes of the rotating gate

1. Open in both directions: everybody can pass through without authorization and event logging
2. Closed in both directions: nobody can pass through
3. Open for "IN": the gate let every person through without authorization and event logging, who wants to go "IN"
4. Open for "OUT": the gate let every person through without authorization and event logging, who wants to go "OUT"
5. Authorization and event logging in both ("IN" and "OUT") directions
6. The gate let the person go "IN" after the authorization and then event logging; and closed for "OUT" direction
7. The gate let the person go "OUT" after the authorization and then event logging; and closed for "IN" direction
8. Emergency mode



Emergency mode

In case of emergency, at the base model, it is possible to switch the gate into "Open in both directions" mode by hand or automatically from the building management system. In this mode, the gate let everybody pass through. There is an optional extension for providing escape route of the Proxer Gate 5 for panic case, which operates in case of pulling in a bar: this is the PANIC system (Option 3).

The permission verification can be done with:

- a.) proximity card (Option 1)
- b.) scanning fingerprint (Option 2)
- c.) other mode

Option 1. - for special order

Proximity card access control system

There is a card reader on both side of the turnstile. The entering person shows his card to the reader. The system examines the permission and light up the "green light" if he can go, or the "red light" if the person is not authorized for entering in that moment. At the "green light" the person can pass through.

The Proxer 5 card readers store the data of enterings and outgoings:

- Identifier
- Date
- Time

- Gate

With the EntryNet software the movements can be followed, disabled, listed; with the Worktime software complete time-registering can be made. There is opportunity to store the reason of the movements. In such a case we install the Workstar 64 reader-terminal at the OUT side, which contains functions of the time-registering. The login identifiers can be proximity cards with belonging strip and case, etc. or can be other identifiers such as key-holder, disc transponder, bracelet.

Option 2. - for order

"Latchkey" in fingerprint

Access control system with biometrical identifier. We install a WT Guard terminal with fingerprint-reader onto the enter side of the turnstile.

The entering person places his one or two fingers onto the reader, the reader checks the permission and light up the "green light" if he can go. The exit happens in similar way. The data of the enterings and exits are also stored, just like at the card systems, and can be processed with the EntryNet and Worktime softwares.

Option 3. - for order

Panic system

There is one panic-switch on each side of the gate, which can be set in action by breaking in its faceplate. That case, if we have to ensure free escape way, we have to turn on this switch or the building-management system set the gate into panic mode with the command of fire, gasflow, emergency, escape or evacuation. Two seconds after the hand-operated or automatic command, the gate turns into panic mode: the rotor fully pulls the bars in of one side of the rotating column and the rotor fasten it in that position. In this position the gate is penetrable. The panic mode will be logged.

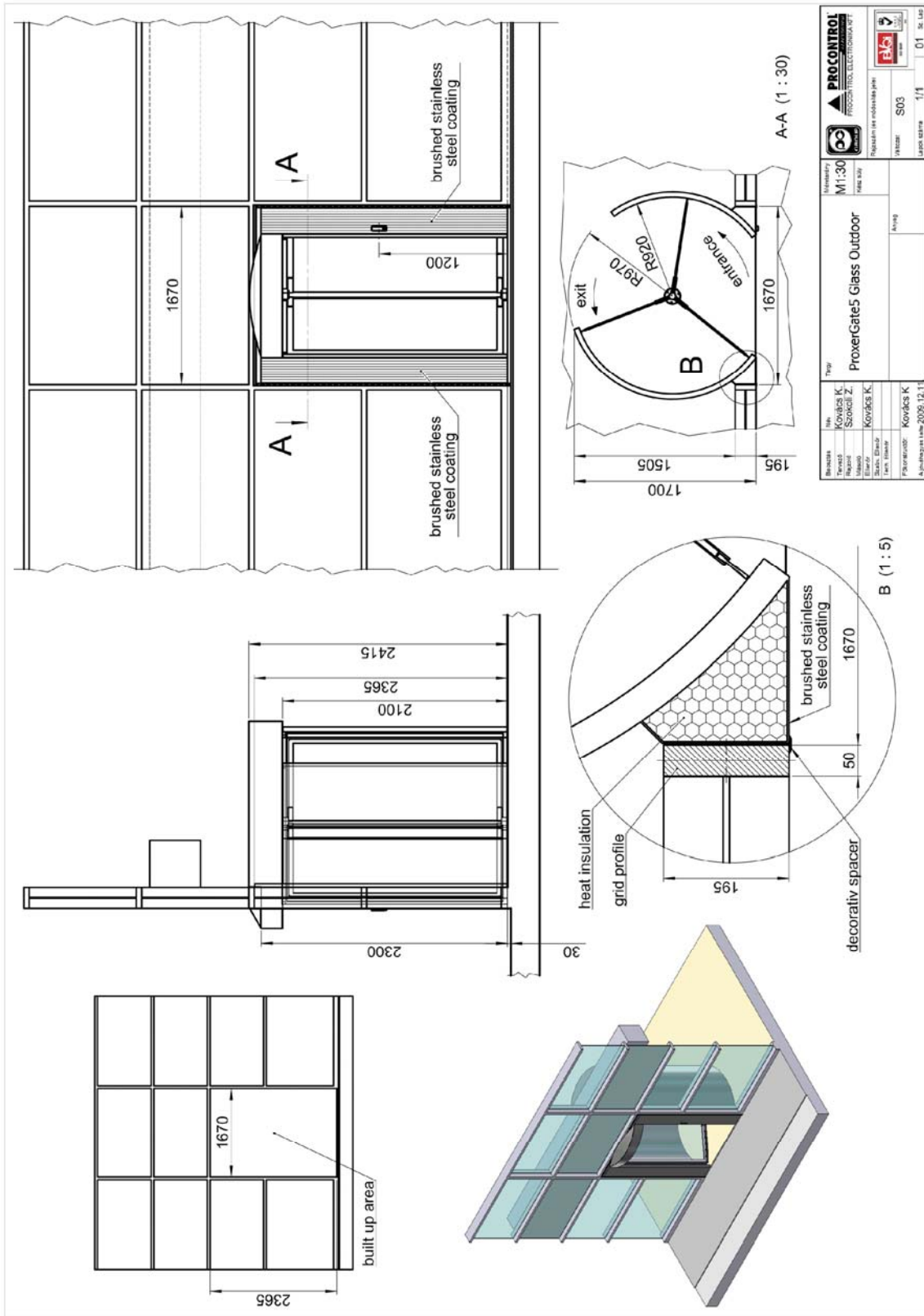
Connecting to building- management system

The ProxerGate 5 has intelligent communication system and can be connected to RS485 or IEE 802 Ethernet 10/100 Mb/s computer network.

So the gate is able to receive REAL TIME operation mode commands sent from the center:

eg. automatically ensure escape way, or query the event log or the movements log of the passing through persons. Over and above this, with the VideoRec option, it is able to make good-quality, coloured video pictures stamped with identifier and time of bi-directional movements. Via Ethernet, these can be stored and looked up in the supervision center.

PROCONTROL ELECTRONICS



PROCONTROL ELECTRONICS LTD.